

# The Sprout Safety Alliance

## Overview and Progress

**Kaiping Deng**

Institute for Food Safety and Health (IFSH)

Illinois Institute of Technology (IIT)



# Sprout Safety Alliance (SSA)

- **Established with a grant from FDA to Institute for Food Safety and Health (IFSH)**
- **The Alliance is composed of members from the sprout industry, academia, and federal/state government agencies.**

# Sprout Safety Alliance (SSA)

## **GOAL**

**To Enhance the sprout industry's understanding and implementation of the Produce Safety Rule and best practices**

- **Develop a core curriculum**
- **Establish training and outreach programs**

# SSA Curriculum

## **Hazards**

**1.Sprout Safety Hazards**

## **GMP and Food Safety Fundamentals**

**2.Sprout Production Environment**

**3.Employee Hygiene and Health**

**4.Cleaning and Sanitizing of Buildings and Equipment**

**5.Environmental Monitoring: Sanitation Verification**

**→6.Environmental Monitoring: *Listeria* Control**

## **Food Safety Guidance Specific for Sprout Production**

**7. Seed Purchasing, Receiving and → Storage**

**→ 8. Seed Treatment**

**9. Spent Irrigation Water and Sprout Testing**

## **Other Operation-Related Programs**

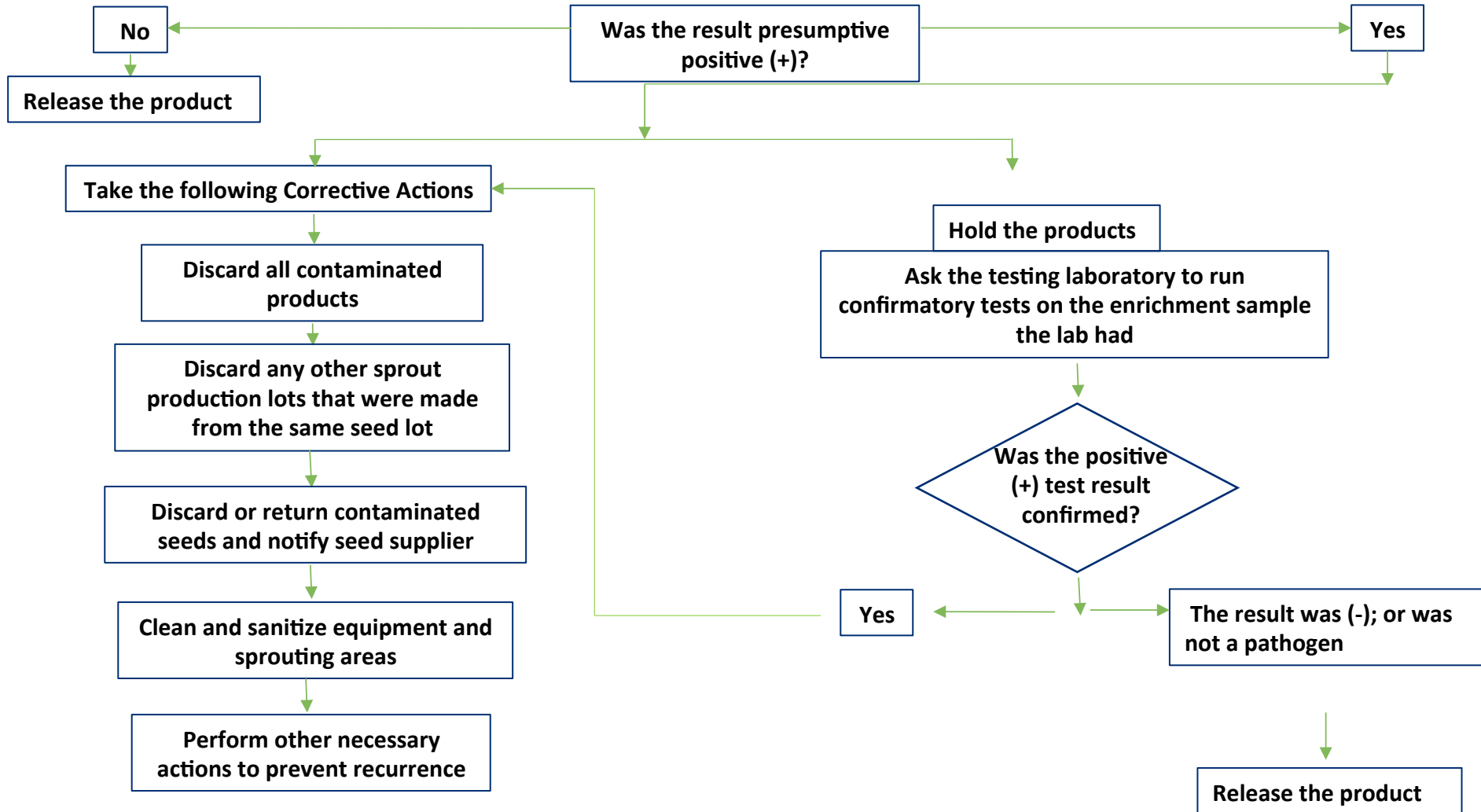
**10. Additional Control Programs**

**11. Recordkeeping Procedures**

## **Outline of FDA Regulation**

**12. Standards for the Growing, Harvesting, Packing, and Holding of Produce for Human Consumption**

# Decision Tree for Corrective Actions for Spent Irrigation Water Testing



# Pilot Sessions and Focus Group Meeting

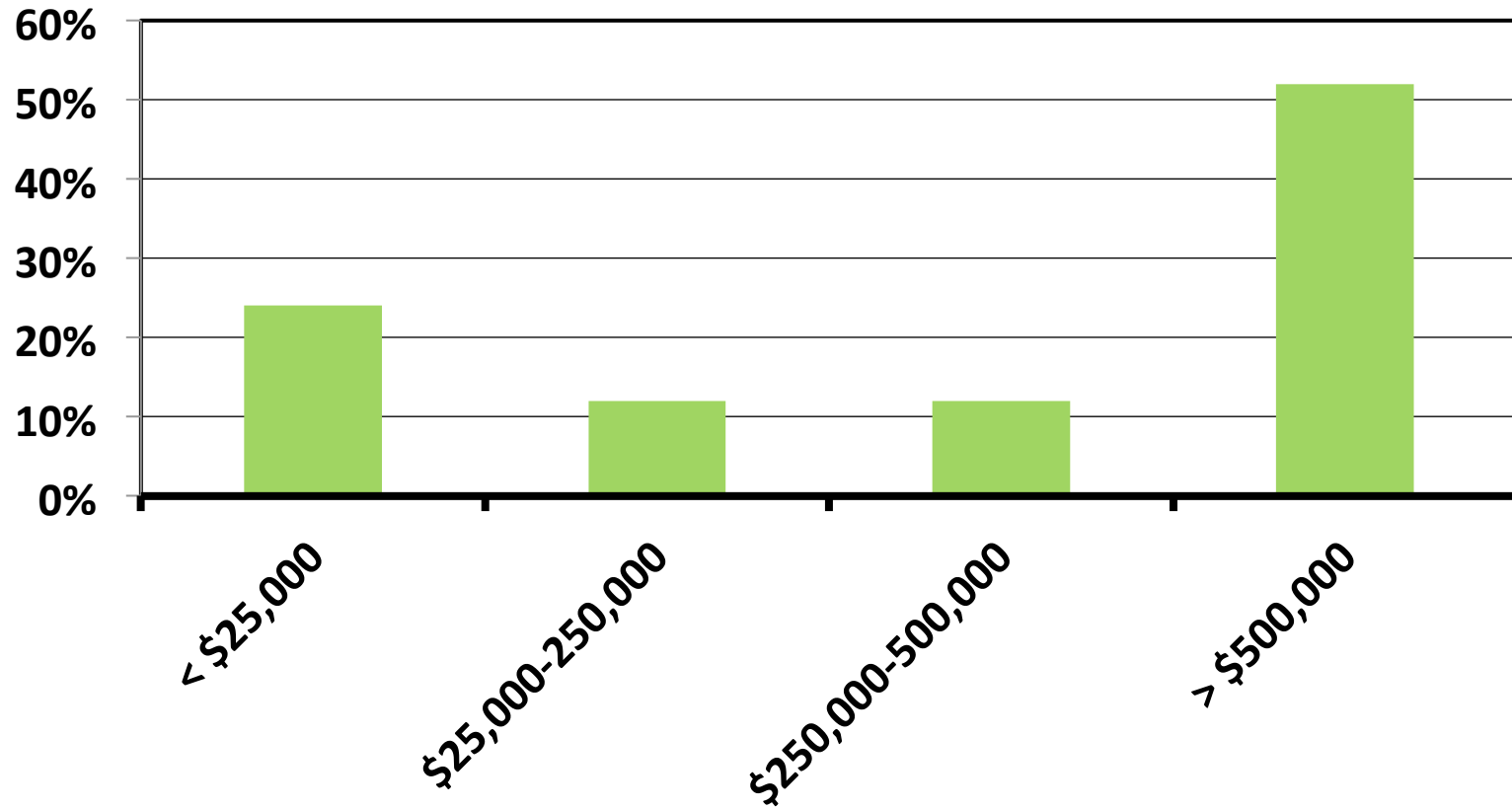
- **Vancouver, BC -- Aug 2012**
- **Chicago, IL -- Feb 2013**
- **Washington DC -- Oct 2013**
- **Richmond, CA -- Aug 2014**
- **Chicago, IL – Dec 2015**

# SSA Survey

- **Contact information of ~250 sprout growers was collected.**
- **A survey on training format and delivery method was conducted.**

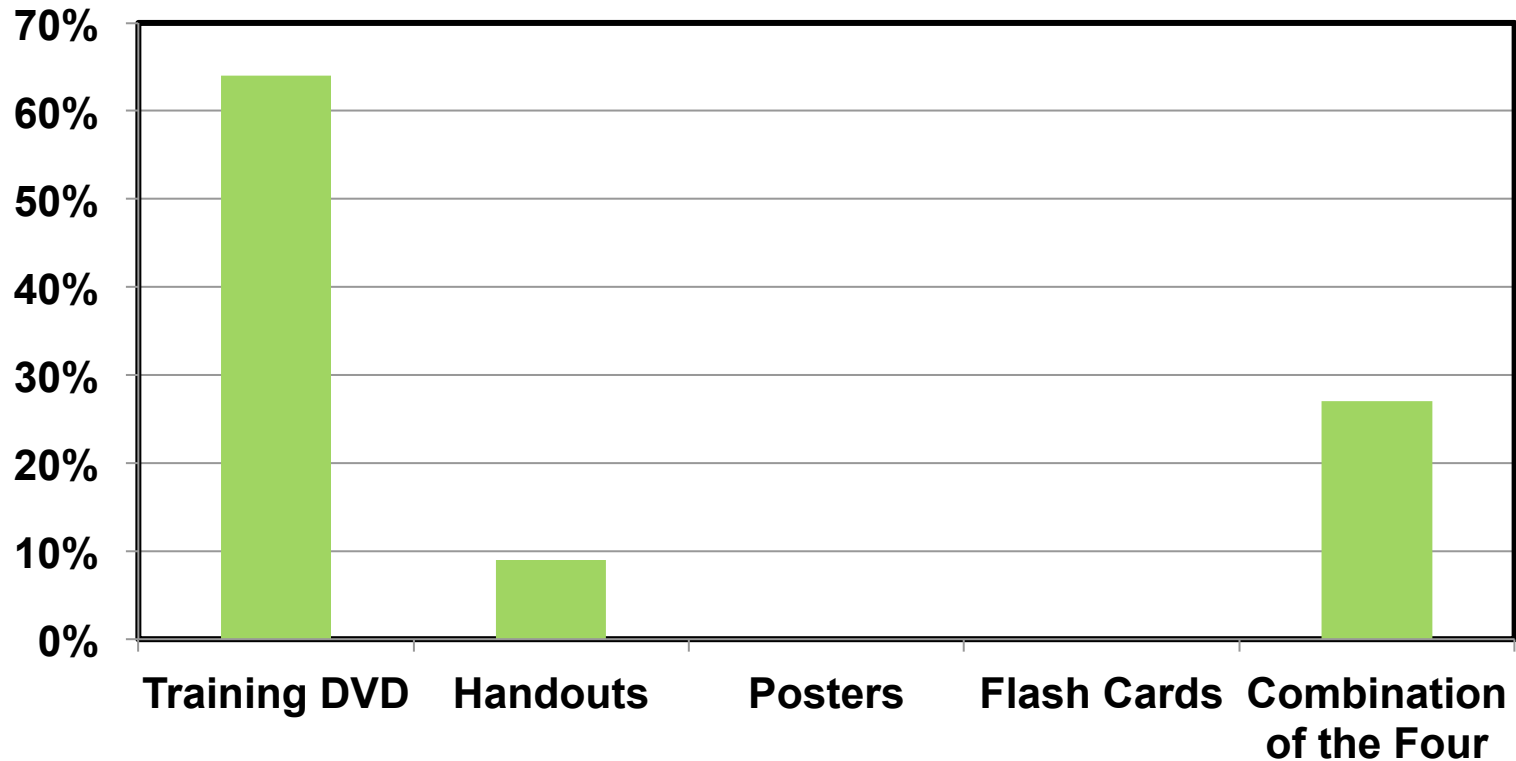
# Survey Demographic

## Average Annual Monetary Value of Produce Sale





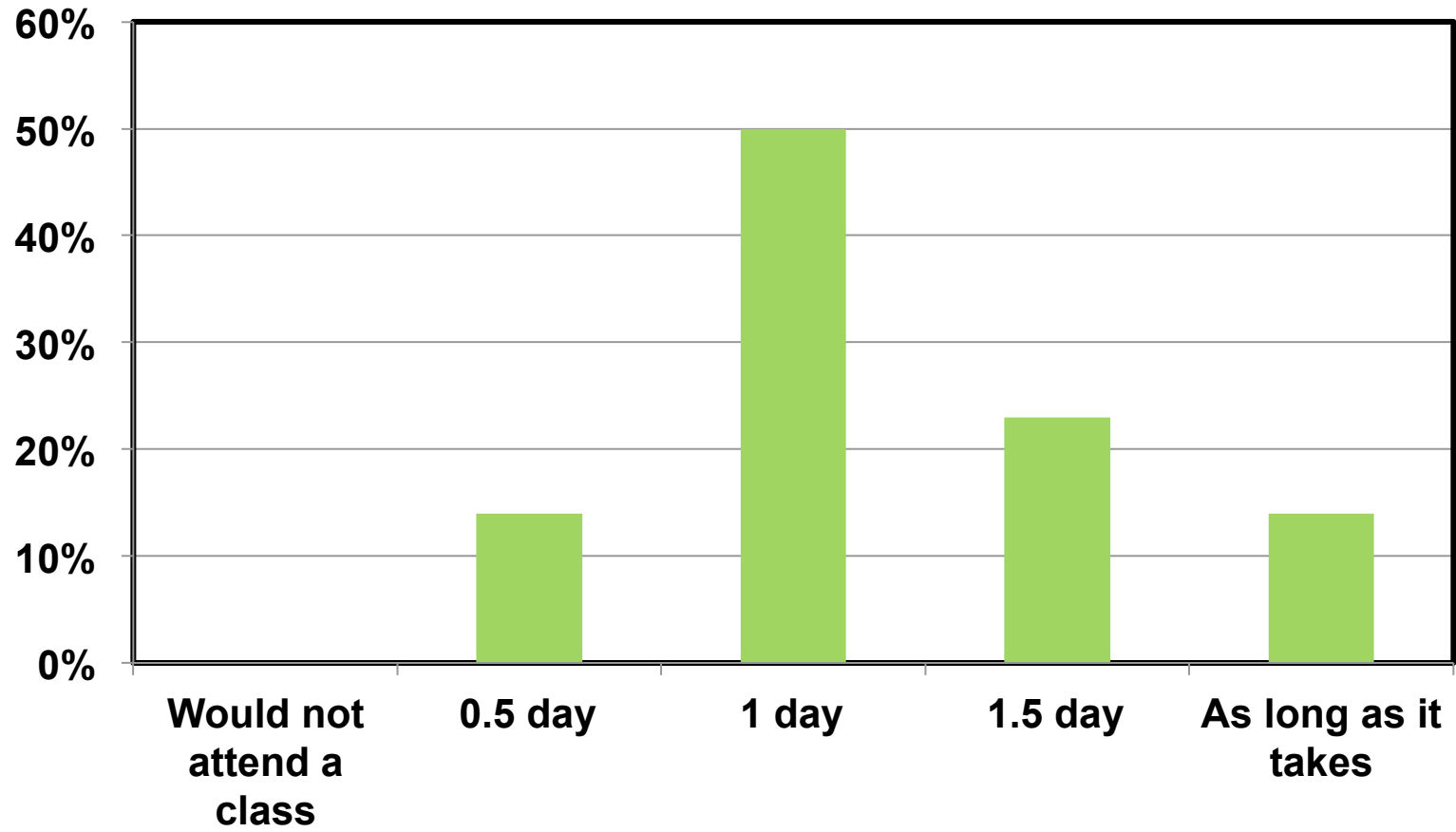
# Existing Training in Sprout Industry



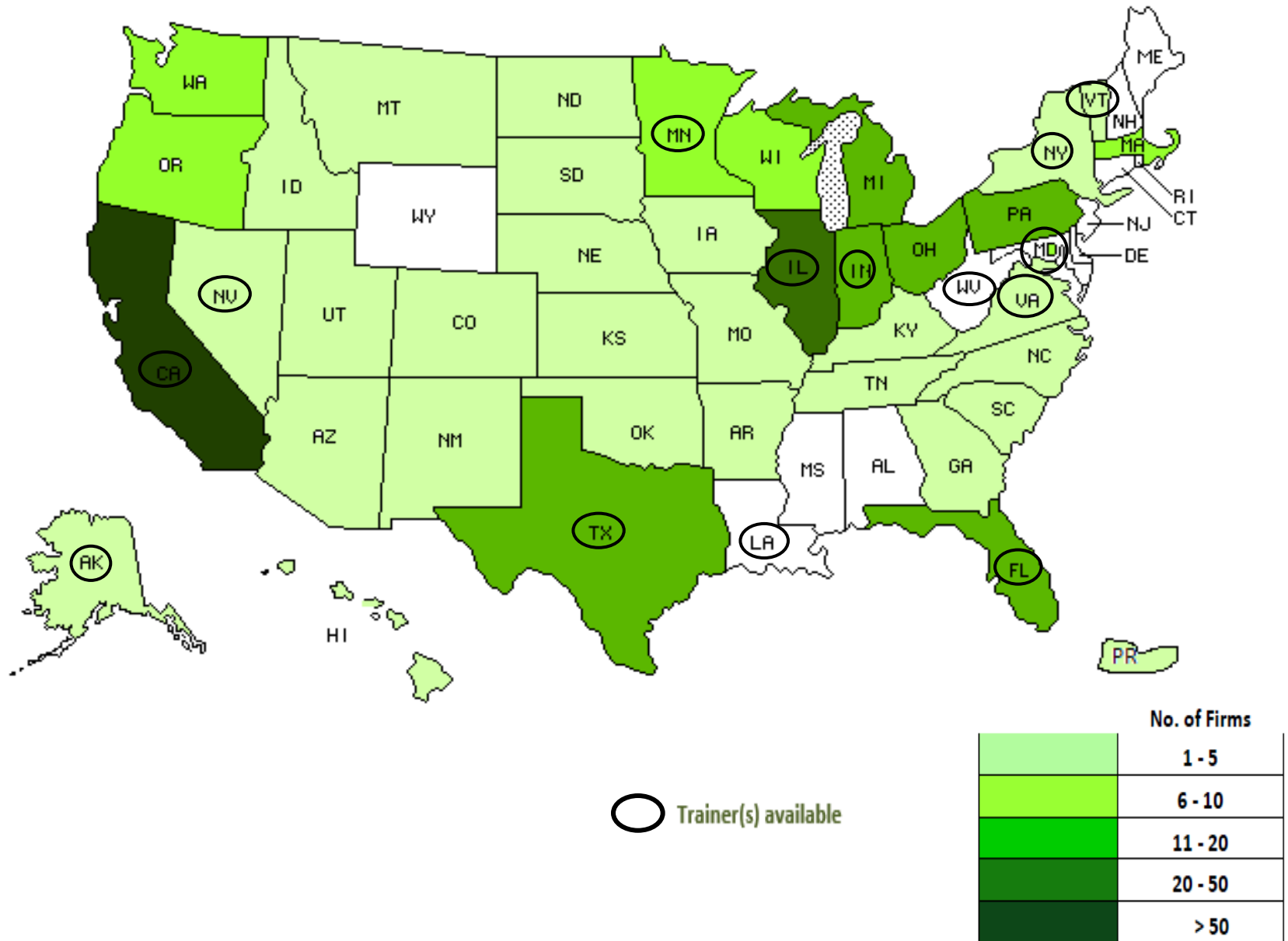
# Training Format Preference

<b>Training Formats</b>	<b>Ranking Scores</b>
Combination of Instructor-Led Class and Webinar	2.67
Instructor-Led Class	2.57
Webinar	2.43
Online Training Course with FAQ	2.33

# Willingness to Attend a Training Class



# Geographic Distribution of Sprout Growers



# Potential SSA Trainers

Potential SSA Trainers	Number
State Regulators	10
University Extension Specialists	7
Consultants	5

# Tentative SSA Training Timeline

- **6/2016- Manual Printing (V1.0)**
- **6/2016- Training Slide Review**
- **7/2016- Online Module Development**
- **8/2016- Train-The-Trainer (TTT) Course**
- **10/2016- Manual Revision (V1.1)**
- **10/2016- Sprout Growers Course**

# Thank you!

[http://www.iit.edu/ifsh/sprout\\_safety/](http://www.iit.edu/ifsh/sprout_safety/)

[sproutalliance@iit.edu](mailto:sproutalliance@iit.edu)

**Kaiping Deng, PhD**

Institute for Food Safety and Health (IFSH)

Illinois Institute of Technology (IIT)

(708) 563-8170

